

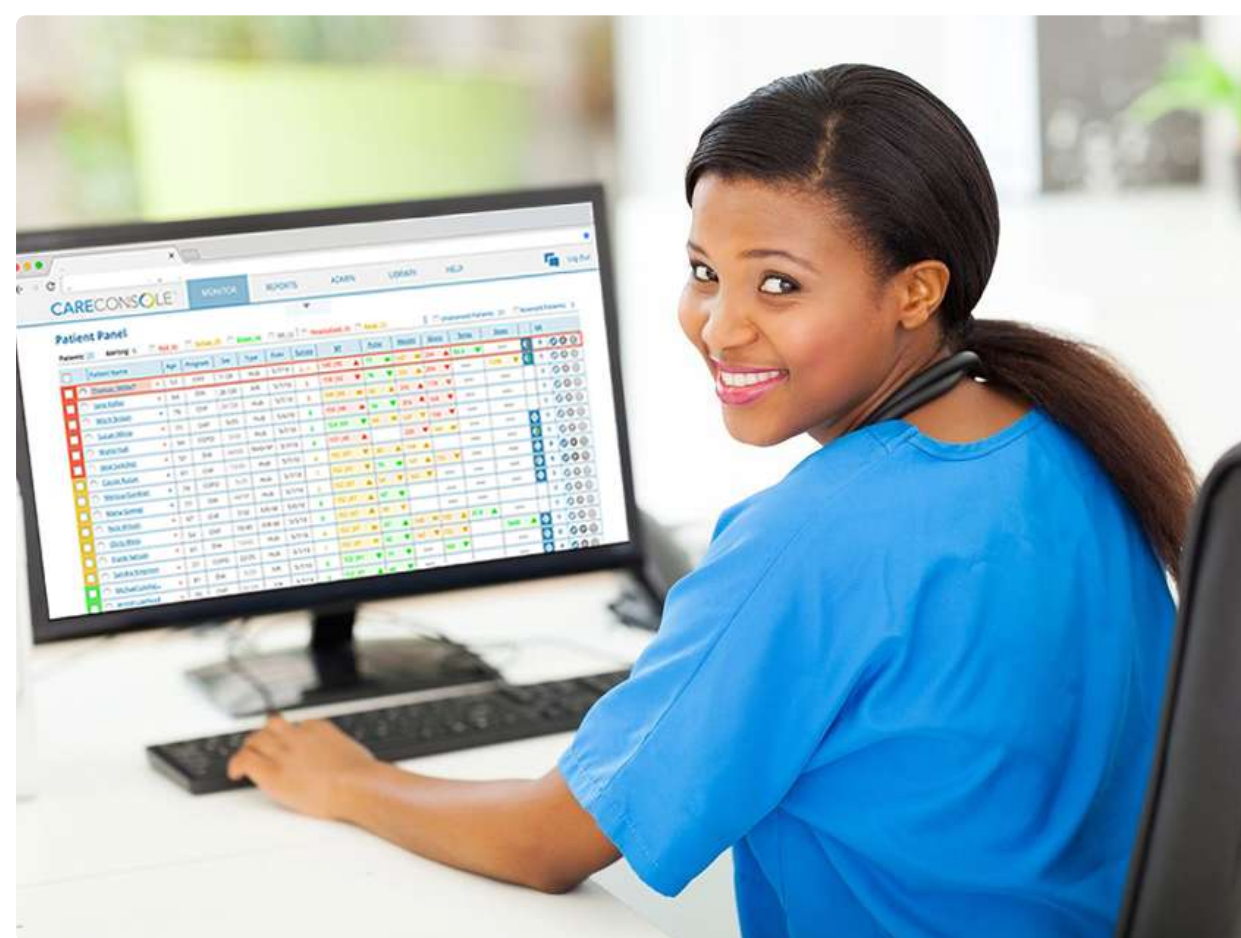
AMC Health offers end to end key clinical, business intelligence and logistics services for a unique and comprehensive approach to patient care. Plus, comprehensive logistics and help desk support for shipping, cleaning and inventorying peripherals ensure timely deployment to patients.

TCM Clinical Services

AMC's proprietary solution includes more than 200 Bluetooth® devices that connect seamlessly across all chronic care needs and is fully integrated with our CareConsole platform that captures incoming biometric, patient-reported, and clinician-reported outcomes to enable intimate communication and care management for a wide variety of patient populations.

- Analyze and validate the remote data captured from patients
- Follow-up with patients to clarify self-reported information and address compliance issues
- Provide targeted disease education
- Identify barriers that may be affecting utilization
- Video for telehealth visits

Expertly use behavior intervention techniques to proactively address negative trends



Business Intelligence and Advanced Analytics

AMC Health offers deep business intelligence to support the successful creation and maintenance of population health programs.

Our advanced analytic services enable organizations to integrate insights into their day-to-day operations and workflows to augment decision making at the point of care.

- Data mining and population health analytics
- Predictive risk analytics
- Patient disease progression
- Chronic disease models and risk patterns
- Utilization analytics
- Eligibility verses claim analytics
- Utilization analytics
- Program evaluation to modify program targeting and interventions

Logistics

AMC Health frees customers from having to assume anything required for the operation, installation, protection or retrieval of technology placed in a patient's home. We provide end-to-end logistics and support including:

- Acquisition testing and calibration
- Warehousing
- Delivery and installation
- Patient and caregiver instruction
- Troubleshooting
- Servicing
- Utilization analytics
- Device retrieval and sanitization for redeployment

